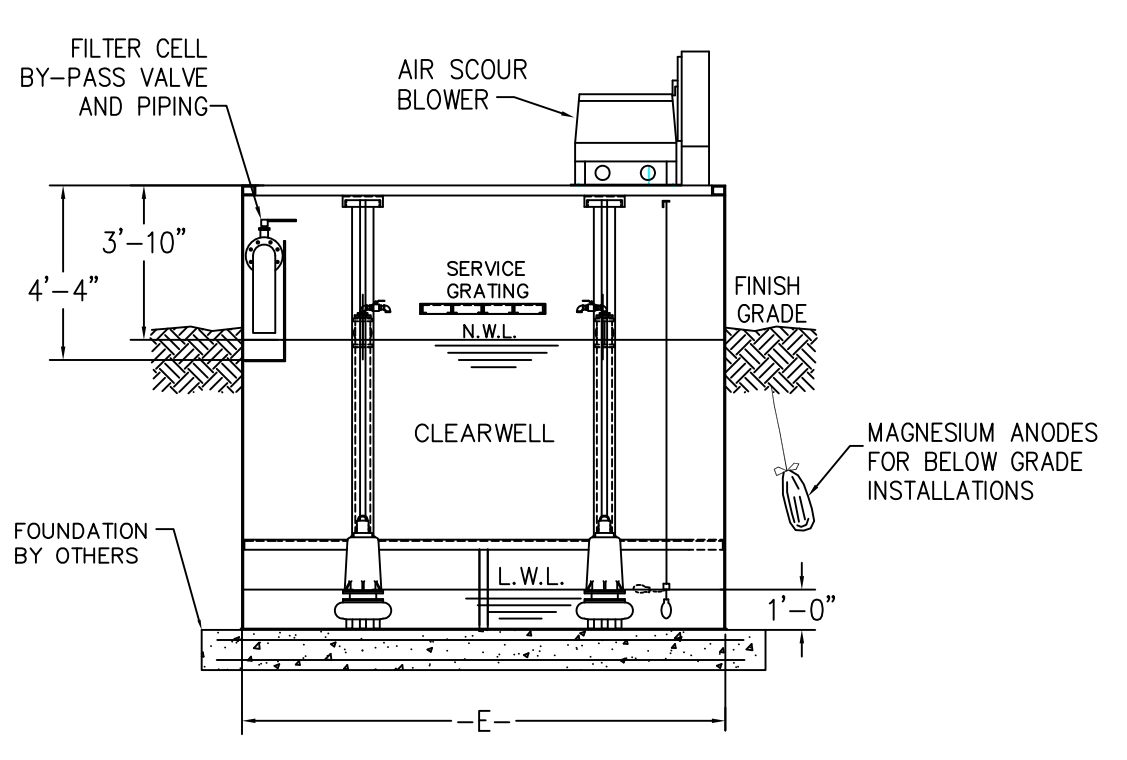
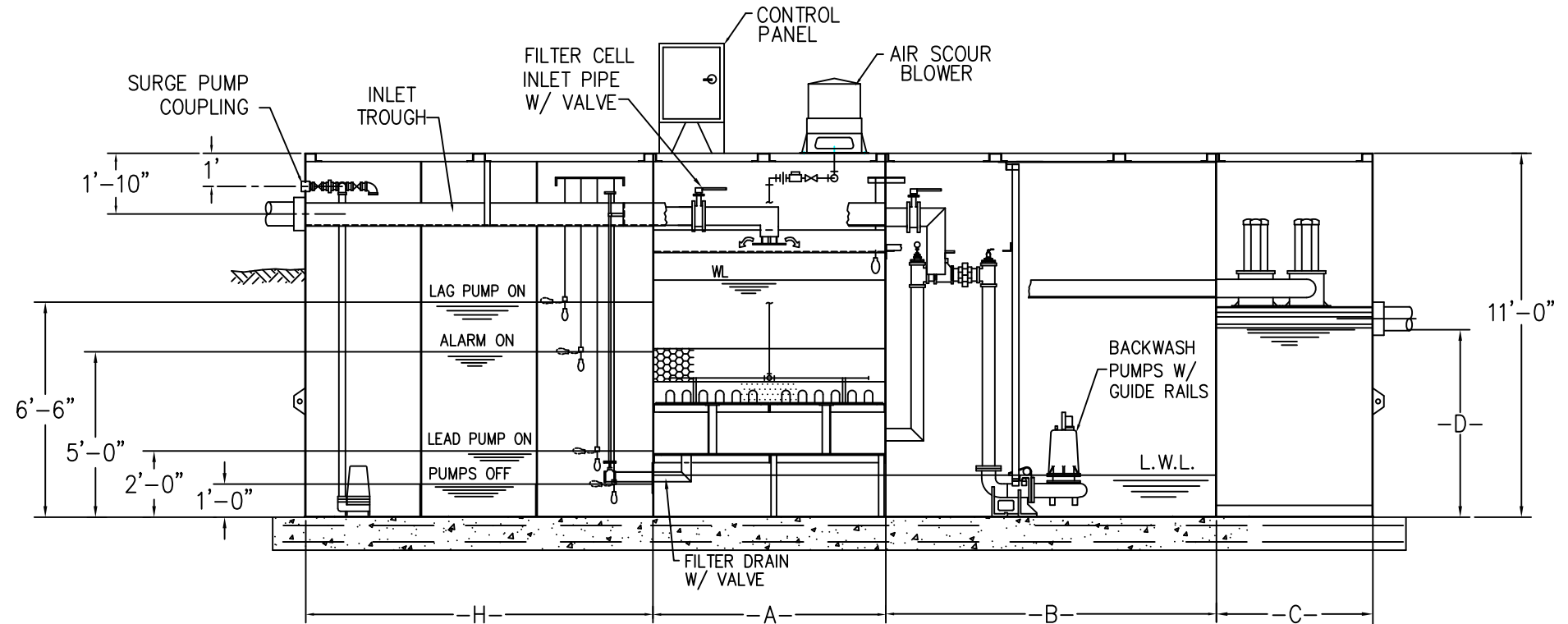


PLAN VIEW

SECTION B-B



ELEVATION VIEW

SECTION C-C

MAX. DESIGN FLOW = _____ SURGE TANK FILTER CELLS CLEARWELL TANK CHLORINE CONTACT TANK

OPTIONAL EQUIPMENT- MATERIALS -TANKAGE

FULL TANK GRATING	GALVANIZED PIPING
BAR TYPE GRATING	DE-CHLORINATION
HANDRAILS/ TOEPLATES	GAS CHLORINATION
LADDERS/ STAIRWAYS	U V DISINFECTION
ANCHOR BRK'TS	NEMA 4X PANEL
MAGNESIUM ANODES	REMOTE MOUNTED
EPOXY PAINT SYSTEM	BLOWERS & CONTROLS

- NOTES:
- 1) ALL EXTERNAL TANK PIPING TO THE TANK IS NOT SUPPLIED BY PCS
 - 2) FOUNDATION PAD DESIGN IS DETERMINED BY THE PROJECT ENGINEER AFTER A SITE SOIL ANALYSIS IS COMPLETED.
 - 3) ACCESS LADDERS AND HANDRAILS ARE OPTIONAL
 - 4) INCOMING ELECTRICAL POWER SUPPLY AND THE CONNECTION TO THE CONTROL PANEL IS BY OTHERS.

TERTIARY FILTER MODEL NO.	AREA IN SQ. FT.		CHAMBER VOLUME IN GAL.		
	FILTER CELL NO. 1	FILTER CELL NO. 2	CLEARWELL	SURGE	CHLORINE CONTACT
TF-2- -C					

REV.	DATE	DESCRIPTION	APPROV.
1	12/17/18	ADDED VALVES TO FILTER DRAINS	JJM
2	3/1/15	UPDATED BACKWASH PUMPS TO SUBMERSIBLE	JJM
3	11/19/14	UPDATED BLOWERS AND ADDED INLET-BYPASS VALVES	CRM

PCS Pollution Control Systems, Inc.
 5827 Happy Hollow Rd, Suite 1B
 Milford, Ohio 45150
 (513) 831-1165
 PolConSys@aol.com

PREFABRICATED TERTIARY FILTER SYSTEM

SCALE: NTS	QUOTE NO.	PROJECT NO.
DRAWN BY: JJM	DATE: 1-27-99	SHEET: DRAWING NO.
CHECKED BY: JJM	DATE: 1-29-99	1 OF 1 PF-6-C

THIS DRAWING CONTAINS INFORMATION THAT IS PROPRIETARY TO POLLUTION CONTROL SYSTEMS AND IS NOT TO BE USED WITHOUT PERMISSION OF POLLUTION CONTROL SYSTEMS